



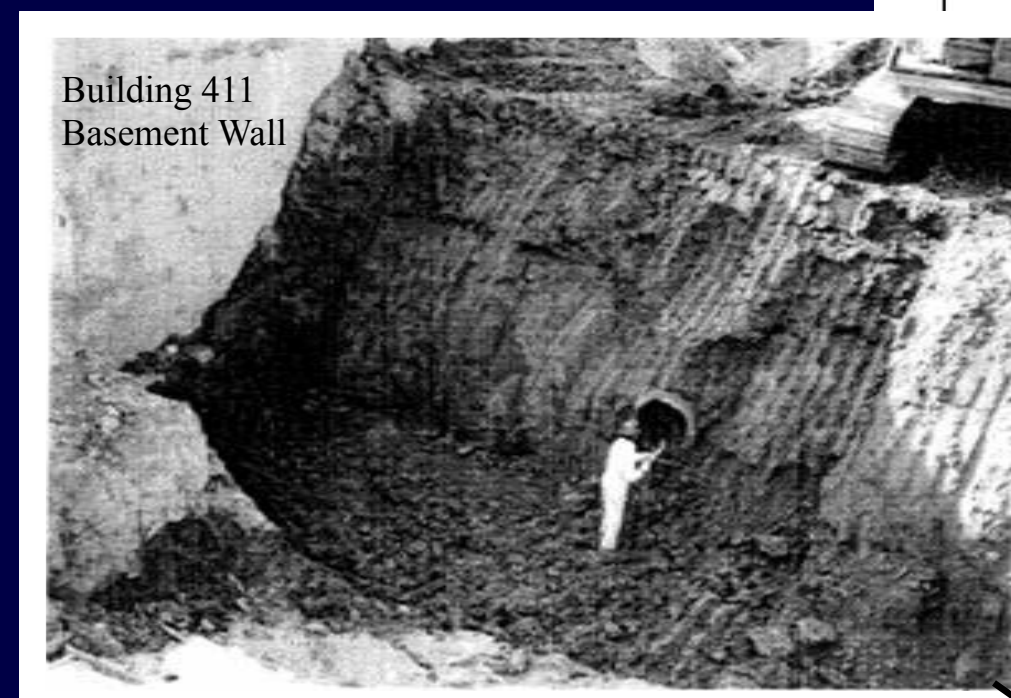
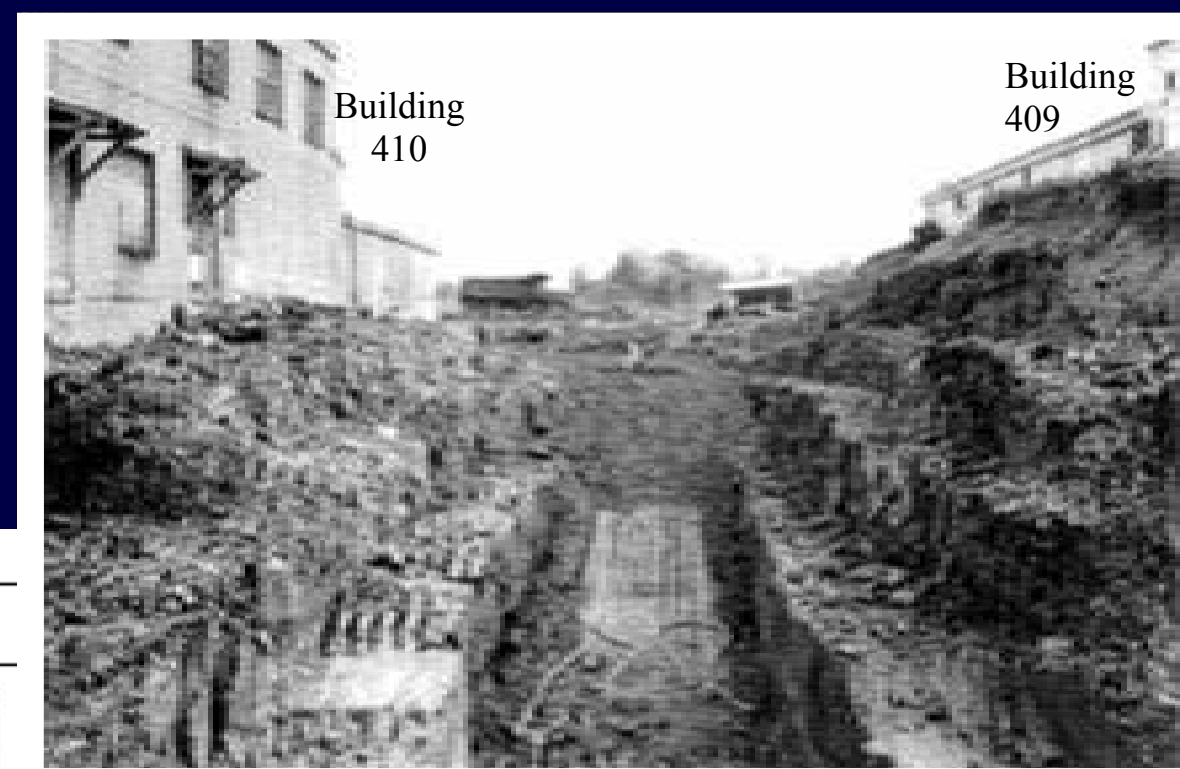
US Army Corps  
of Engineers  
Buffalo District

# PIPELINES AND UTILITIES

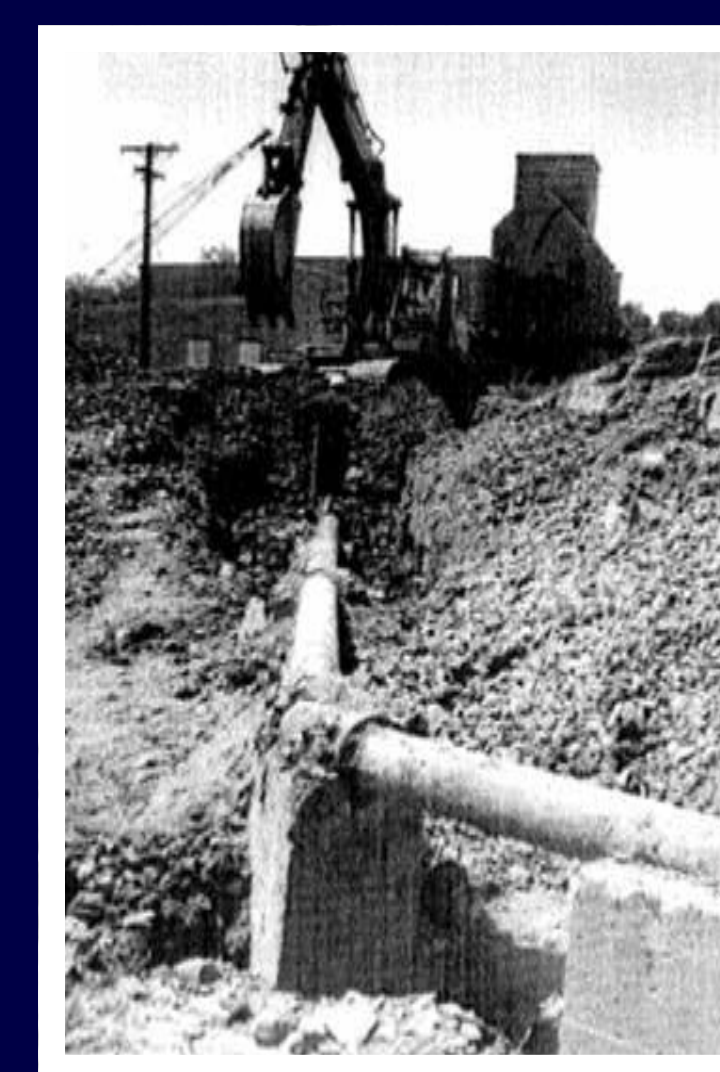
## LOCATION OF IWCS PIPELINES AND UTILITIES

Excavation at the cut-off wall north-west of Building 411 exposing a 30 inch reinforced concrete pipe 411 (looking south)

Excavation of the south cut-off wall (looking east between Building 410 and Building 409)

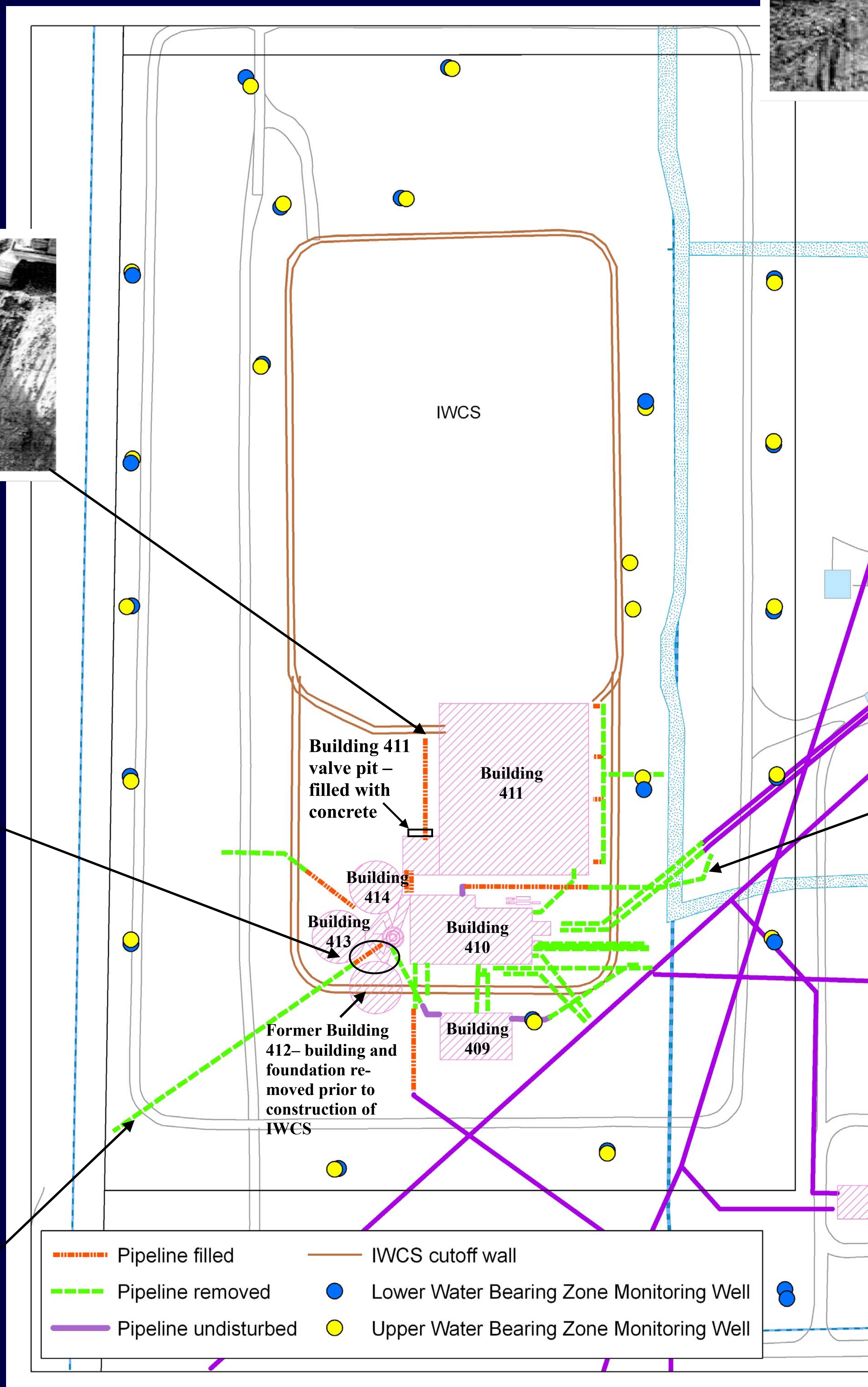


Portion of the wood-encased 42 inch water supply line filled during construction of the IWCS



10 inch cast iron pipe running east from Building 410 (looking west from Central Ditch toward Building 410)

Former 42 inch diameter concrete water supply line



Excavated trench showing the 30 inch reinforced concrete pipe at Building 411 on the east side of the valve pit

Excavated trench at Building 411's valve pit showing the 30 inch reinforced concrete pipe which had sections removed for sealing (looking south)

